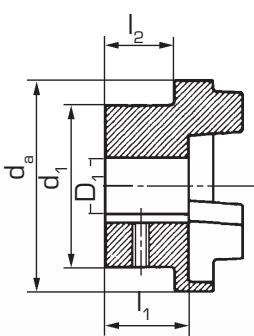
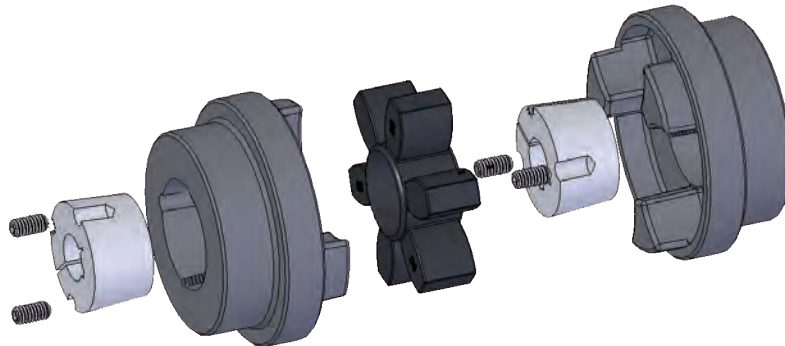
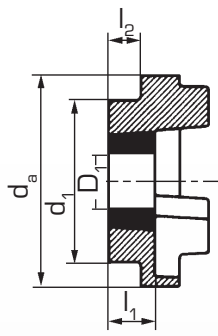


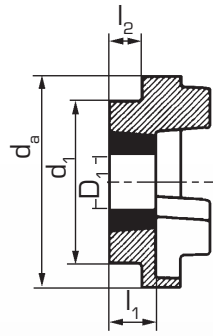
HRC-Flange B, F, H



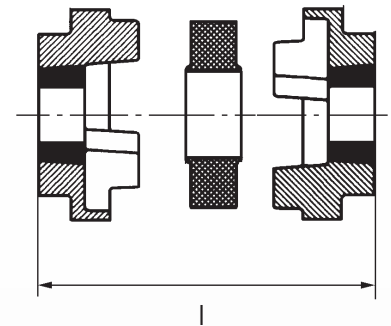
B-Flange



F-Flange



H-Flange



Size	B Flange				Bush	F u. H Flange				d _a	d ₁	Installation length			
	Pre. mm	D ₁ (H7) ¹⁾ max. mm	l ₁ mm	l ₂ mm		min. mm	max. mm	l ₁ mm	l ₂ mm			l			
												FF FH HH mm	FB HB mm	BB mm	
70	8	32	23,5	20	1008	10	25	23,5	20	69	60	65	65	65	
90	10	42	30,5	26	1108	10	25	23,5	19,5	85	70	69,5	76	82,5	
110	10	55	45,5	37	1610	14	40	26,5	18,5	112	100	82	100,5	119	
130	15	60	47,5	39	1610	14	40	26,5	18,0	130	105	89	118	147	
150	20	70	56,5	46	2012	14	50	33,5	23,5	150	115	107	133,5	160	
180	25	80	70,5	58	2517	16	60	46,5	34,5	180	125	142	165,5	189	
230	25	100	90,5	77	3020	25	75	52,5	39,5	225	155	164,5	202	239,5	
280	30	115	105,5	90	3525	35	100	66,5	51,0	275	206	207,5	246,5	285,5	

> 1) Drill holes H7 with keyway in accordance with DIN 6885/1; tolerance zone JS9 and set screws on the keyway