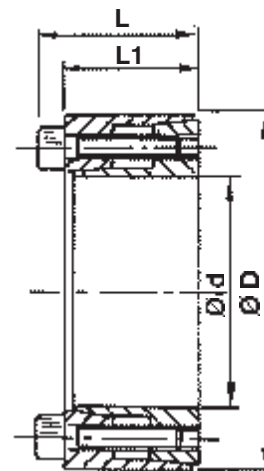


SELF-CENTRING TYPE CLAMPING ELEMENTS RCK 61



N.B. The recommended machining tolerances for the pressure surfaces are as follows:
h8 for Shaft
H8 for Hub

ORDERING EXAMPLE:
 The following will be ordered with a shaft having $\varnothing d$ 15 with a torque value less than or equal to 40 Nm: **RCK 61 - 15x28.**

RCK 61												
$\varnothing d$	DIMENSIONS			Torque Mt Nm	PRESSURES			Clamping Screws DIN 912 MAT. 12.9			Extraction Thread	
	$\varnothing D$	L1	L		Shaft N/mm ²	Hub N/mm ²	No.	Type	Torque Nm	Type	No.	
10	20	13	15.5	15	110	55	4	M2.5x12	1.2	M2.5	2	
12	22	13	15.5	20	90	50	4	M2.5x12	1.2	M2.5	2	
14	26	17	20	35	105	55	4	M3x16	2.1	M3	2	
15	28	17	20	40	100	50	4	M3x16	2.1	M3	2	
16	32	17	21	70	130	65	4	M4x16	4.9	M4	2	
18	35	21	25	80	115	60	4	M4x20	4.9	M4	2	
19	35	21	25	85	110	60	4	M4x20	4.9	M4	2	
20	38	21	26	220	220	115	6	M5x20	9.7	M5	3	
22	40	21	26	240	200	110	6	M5x20	9.7	M5	3	
24	47	26	32	380	220	110	6	M6x25	16.2	M6	3	
25	47	26	32	390	210	110	6	M6x25	16.2	M6	3	