

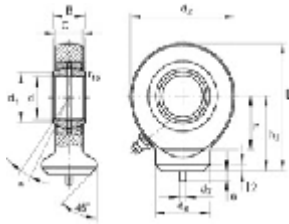


## Hydraulic Cylinder Rod Ends

## G K . . D O Series

## Specifications:

- 1) Sliding contact surfaces: Steel vs. Steel.
- 2) Materials: Body is made of carbon steel, insert bearing is made of high chrome bearing steel.
- 3) Heat treatment: Body surface is phosphorized.
- 4) Features of structure: The unit consists of a body and a spherical plain bearing GE..ES. With oil nipple.
- 5) Properties: Good wearability, corrosion resistance, self-alignment, heavy load capacity.



Designation	d	B	dk	C1 max	d2 max	h	L2 max	d5 max	d6	e	rs min	α	Dynamic load (KN)	Static load (KN)	Weight (Kg)
GK10DO	10	9	16	7	29	24	38.5	15	3	2	0.3	12	8.1	15	0.041
GK12DO	12	10	18	8	34	27	44	17.5	3	2	0.3	10	10	20	0.066
GK15DO	15	12	22	10	40	31	51	21	4	2.5	0.3	8	16	24	0.12
GK17DO	17	14	25	11	46	35	58	24	4	2.5	0.3	10	21	31	0.19
GK20DO	20	16	29	13	53	38	64.5	27.5	4	2.5	0.3	9	30	42	0.23
GK25DO	25	20	35.5	17	64	45	77	33.5	4	3	0.6	7	48	66	0.43
GK30DO	30	22	40.7	19	73	51	87.5	40	4	3	0.6	6	62	87	0.64
GK35DO	35	25	47	21	82	61	102	47	4	3	0.6	6	79	99	0.96
GK40DO	40	28	53	23	92	69	115	52	4	4	0.6	7	99	122	1.3
GK45DO	45	32	60	27	102	77	128	58	6	5	0.6	7	127	160	1.8
GK50DO	50	35	66	30	112	88	144	62	6	5	0.6	6	156	193	2.5
GK60DO	60	44	80	38	135	100	167.5	70	6	5	1	6	245	294	3.9
GK70DO	70	49	92	42	160	115	195	80	6	6	1	6	313	406	6.6
GK80DO	80	55	105	47	180	141	231	95	6	6	1	6	400	494	8.7